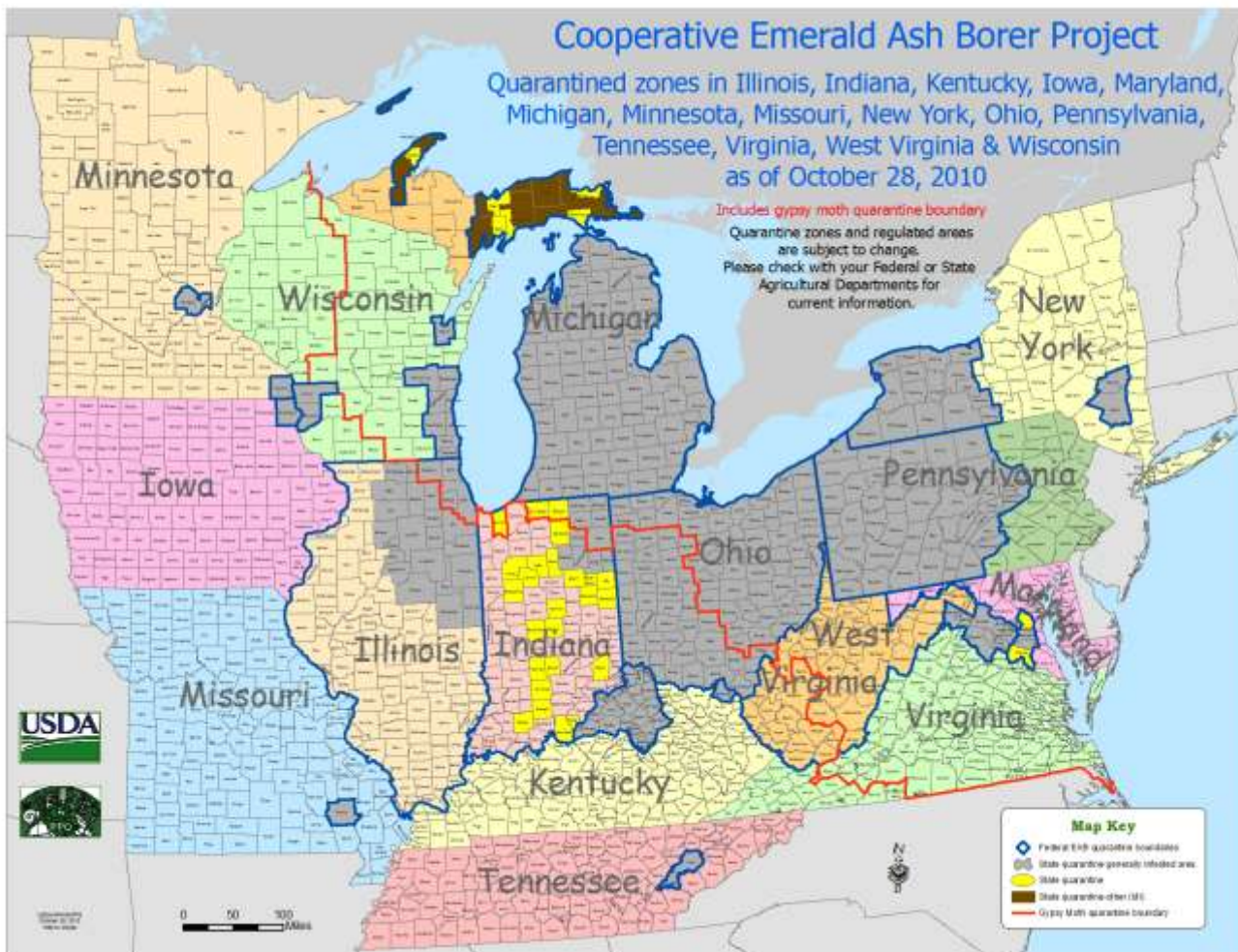


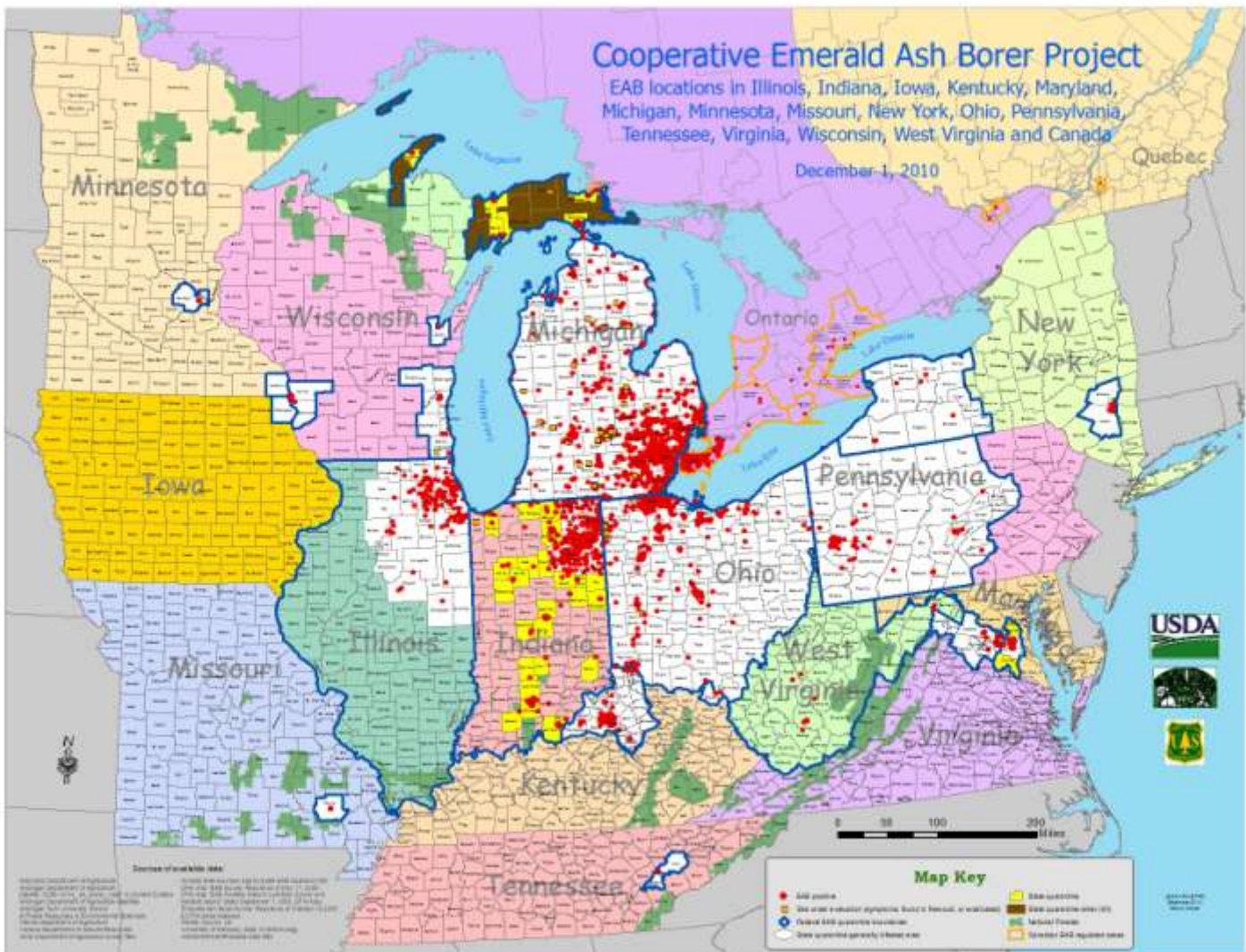
Emerald Ash Borer Program Weekly Report

Week of 12-06-10 through 12-10-10

EAB Quarantine Map:

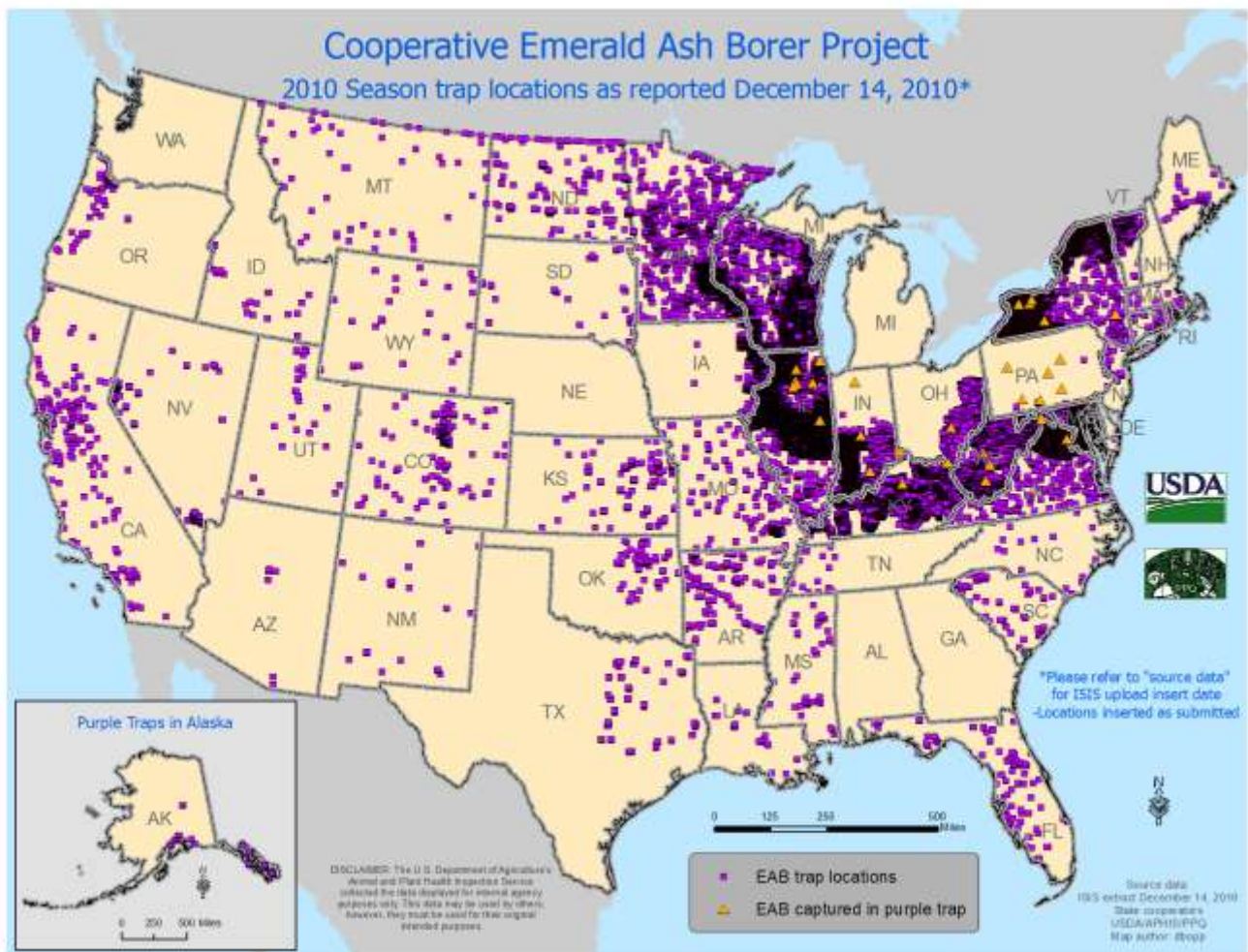


EAB Detection and Quarantine Map:



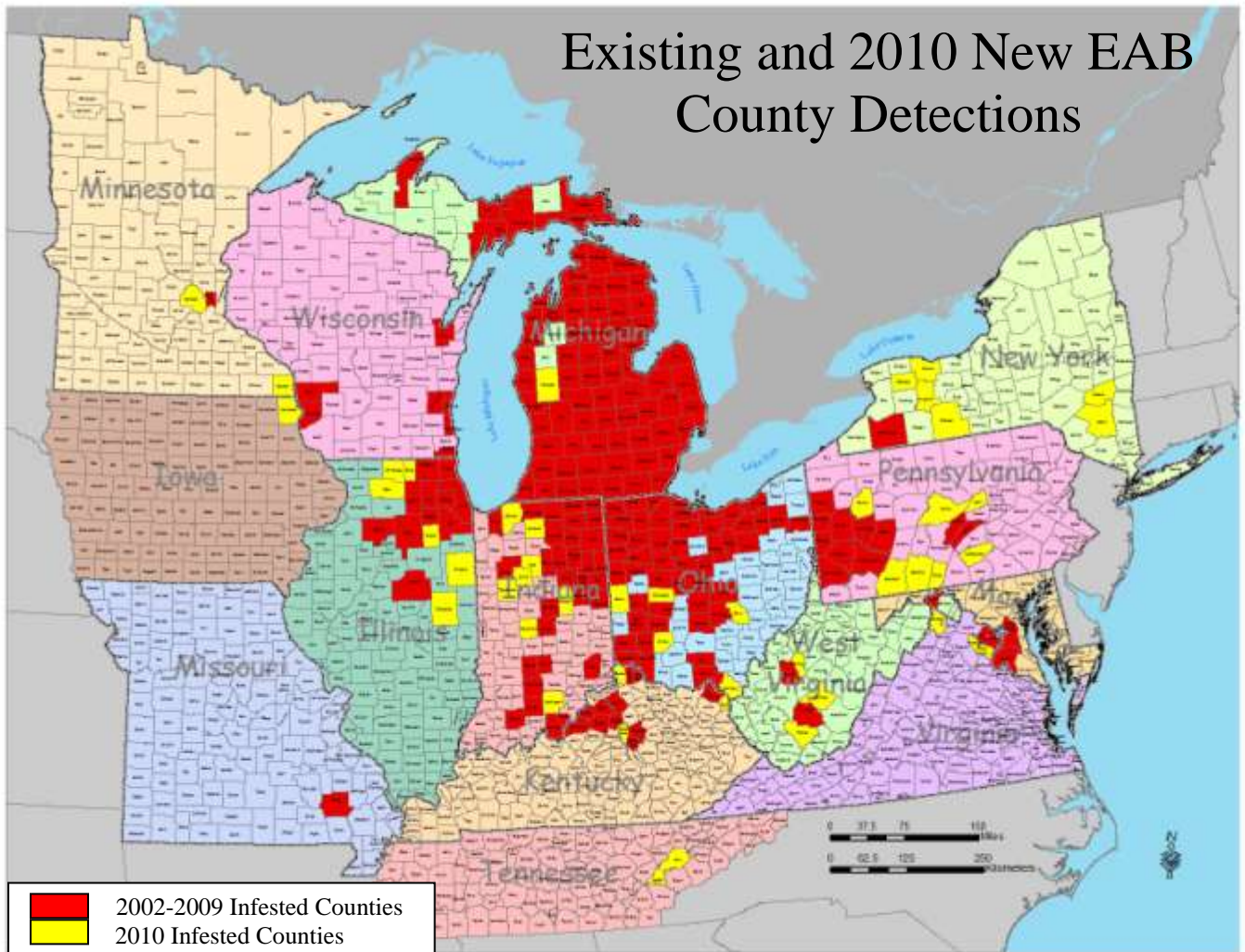
2010 EAB Survey Trap Locations

The map below displays locations of purple prism traps used for the detection of emerald ash borer as reported to ISIS. Cooperators are requested to submit their survey data at their earliest convenience to ISIS.



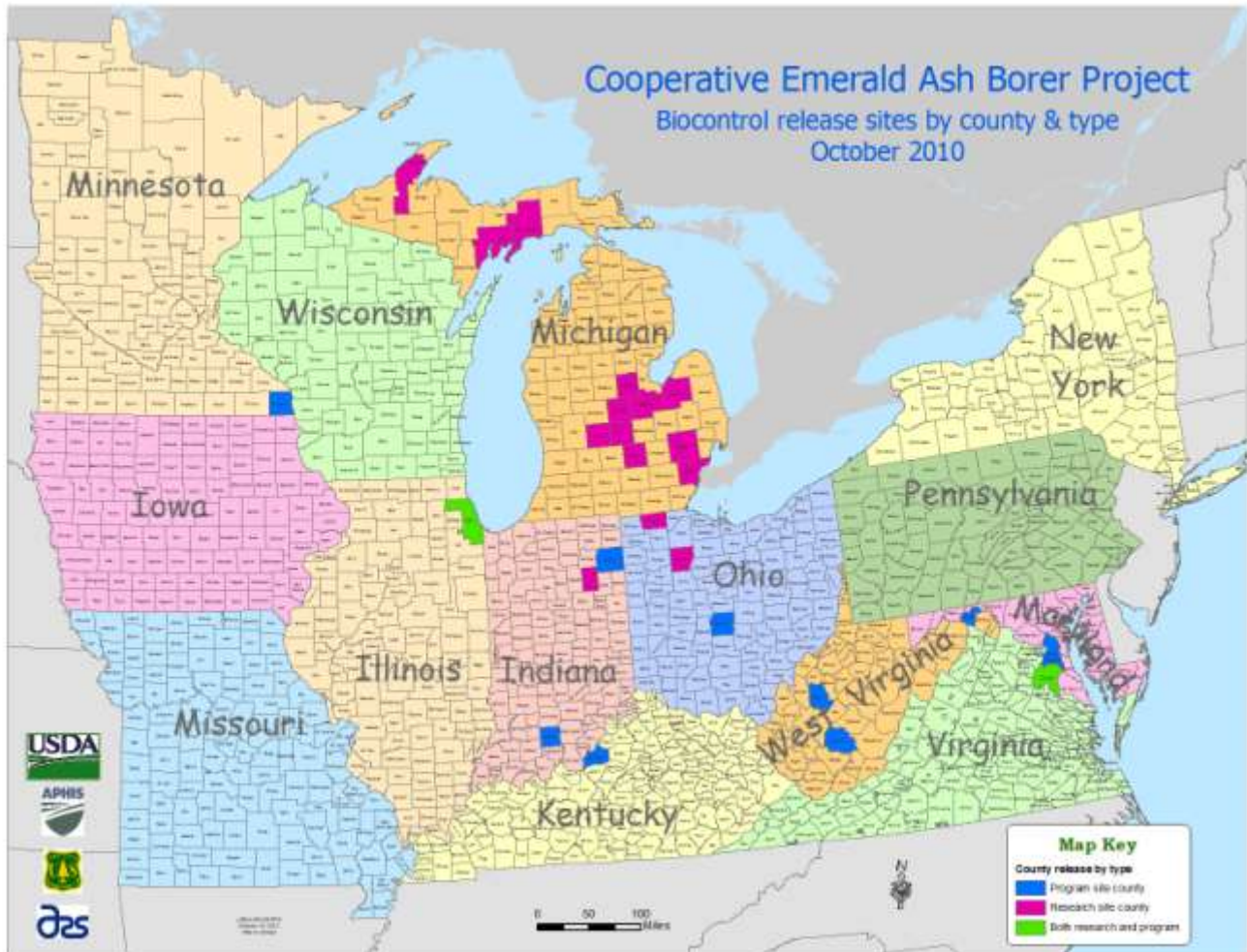
Note: If you have not already recorded trap data into ISIS, please do so before December 31, 2010. Thank you!

2010 EAB New County Detections



The baited purple panel trap accounted for 27 (59%) of the 46 total EAB new county detections in the 2010 calendar year. A variety of survey methods and outreach are responsible for the other 19 non-trap new county detections. Of the 27 new county trap captures, 10 were found in the 2010 EAB Grid-based Survey while 17 new county detections resulted from traps placed in high risk areas. It is important to note that 23 (50%) of the new detections occurred in counties in states that were entirely under Federal quarantine for emerald ash borer. Additionally, only 11 (24%) new county detections were not adjacent to a federally-quarantined area.

EAB Biological Control Release Sites by County



The above map depicts counties where releases of emerald ash borer biological control agents have been conducted for research and program purposes. The Biological Control Production Facility in Brighton, Michigan provided beneficial insects for release to eight states during the 2010 release season.

Twelve states currently retain a PPQ P526 permit for release of specific EAB biological control agents which include IL, IN, KY, MD, MI, MN, NY, OH, PA, VA, WI, and WV.

Biological Control Release Totals for 2010:

Oobius agrili 5,452 females
Tetrastichus planipennisi 105,946 females
Spathius agrili 55,279 females

In the Press:

City to seek state grant to remove, replace ash trees

Middletown Journal

... Department of Natural Resources will assist Middletown with removing and replacing ash trees, which could become infected with the Emerald Ash Borer.

<http://www.middletownjournal.com/news/middletown-news/city-to-seek-state-grant-to-remove-replace-ash-trees-1023773.html>

Palos area prepares to do beetle battle

Chicago Tribune

By Janice Neumann, Special to the Tribune The destructive emerald ash borer has already invaded a number of south suburbs and now poses a threat in the...

<http://www.chicagotribune.com/news/local/ct-x-s-ash-borer-1208-20101208,0,3470933.story>

City eyes placing road renewal levy on ballot

Aurora Advocate

... city to apply for a grant that would pay for a portion of costs of removing and replacing ash trees that could be destroyed by the emerald ash borer.

<http://www.auroraadvocate.com/news/article/4944057>

Project to plant 700 trees along Metro Detroit roads

The Detroit News

Officials hope the tree plantings will create jobs and help offset the loss of thousands of ash trees killed by infestation of the emerald ash borer.

<http://www.detnews.com/article/20101207/METRO/12070414/1409/METRO>

Public Concern About Invasive Tree Killing Insects and Diseases Remains Strong

PR Newswire (press release)

According to the poll, conducted in September, knowledge of the spread of forest pests such as the Asian longhorned beetle and emerald ash borer,

<http://www.prnewswire.com/news-releases/public-concern-about-invasive-tree-killing-insects-and-diseases-remains-strong-111535019.html>

Note: The proceedings for the 2009 EAB Research and Technology Development Meeting are available at:

<http://www.fs.fed.us/foresthealth/technology/pdfs/2009EAB.pdf>

STATE REPORTS

Illinois:

Illinois USDA Program Activity:

Illinois regulatory staff completed 28 regulatory inspections, 11 compliance checks and 33 quality assurance checks.

Illinois Department of Agriculture Activity:

Field Staff outreach activities – During the week, the 7 permanent field staff members focused on outreach and quarantine compliance activities. During the week, 76 trees were inspected and 20 were determined to be positive for EAB. Also, 79 outreach visits, including meetings with firewood dealers/processors and 40 compliance inspections of compliance agreement holders were conducted.

www.IllinoisEAB.com activity – Visits to the Emerald Ash Borer page on the Department’s website totaled 578 during the week.

EAB quarantine compliance agreements – The Department issued 0 new compliance agreement(s) and discontinued 0 existing compliance agreement(s) during the week. The total number of current compliance agreements is now 1,230.

State Firewood Importer Certification – The regulations creating the program were authorized by Public Act 95-0309 and became on January 1, 2009. During the week, the Department issued 0 firewood importer certificate(s) bringing the total number of certificates issued for 2010 to 45.

Indiana:

Indiana USDA Program Activity:

PPQ staff continue to update compliance agreements, and monitor and inspect regulated articles.

Iowa:

Iowa USDA Program Activity:

Outreach:

Eastern Iowa PPQ provided an outreach packet to 1 tree service company and 1 pallet manufacturer in Clinton County.

Regulatory:

Eastern Iowa PPQ in the process of certifying 2 kilns in Jackson County for the heat treatment of firewood. The temperature sensors were placed in the kilns on Friday. The probes will be retrieved and sent in to be analyzed this week.

Kentucky:

Kentucky USDA Program Activity:

No information was submitted by the KY USDA this week.

Maryland:

Maryland USDA Program Activity:

No information was submitted by the MD USDA this week.

Michigan:

Michigan USDA Program Activity:

The Brighton Facility staff recently hosted Girl Scout Trooper #24, from Round Elementary School in Hartland Michigan. Fifteen scouts and 4 leaders were an engaging and fearless audience for the hands-on sticky trap demonstration, EAB geography lesson and facility tour w/ live specimens. Participants pledged to 'Promise Not To Move Firewood' and carry the message forward to family and friends.

Minnesota:

Minnesota USDA Program Activity:

No information was submitted by the MN USDA this week.

Missouri:

Missouri Cooperative EAB Team Activity:

No information was submitted by the MO USDA this week.

Nebraska:

Nebraska USDA Program Activity:

No information was submitted by the NE USDA this week.

New York:

New York USDA Program Activity:

PPQ reports normal regulatory activity.

Ohio:

Ohio USDA Program Activity:

Regulatory checks of local retailers have turned up several new brands of packaged firewood. While the origins of the wood vary, all seem to be in compliance. However, with more states than ever having EAB quarantines, close scrutiny of all labels is suggested.

Pennsylvania:

Pennsylvania USDA Program Activity:

PPQ Specialist Mitchell Dykstra assisted in kiln recertification for the states of West Virginia and Iowa.

South Dakota:

South Dakota USDA Program Activity:

No information was submitted by the SD USDA this week.

Virginia:

Virginia Cooperative EAB Team Activity:

No information was submitted by the VA USDA this week.

West Virginia:

West Virginia USDA Program Activity:

No information was submitted by the WV USDA this week.

Wisconsin:

Wisconsin USDA Program Activity:

No information was submitted by the WI USDA this week.

Contributors:

Doug Bopp, *Geographer, USDA APHIS PPQ ER*
Jim Buck, *EAB Program Analyst, USDA APHIS PPQ*
Jeff Coath, *SPPQO, IL USDA APHIS PPQ*
Paul Griner, *PSA, IN USDA APHIS PPQ*
Darryl Jewett, *PSS, NY USDA APHIS PPQ*
Jacqueline Knighten, *PPQT, PA USDA APHIS PPQ*
Stephanie Likens, *PPQT, MI USDA APHIS PPQ*
Tom Strang, *PHSS, IA USDA APHIS PPQ*
Scott Walock, *SPPQO, OH USDA APHIS PPQ*

Note: Deadline for inclusion in the EAB Weekly Report is noon on the Tuesday before Friday distribution.

Please direct all inquiries regarding this report to:

Paul Chaloux, USDA APHIS PPQ
National Program Manager
Emerald Ash Borer Program
Riverdale, Maryland
301-734-0917
Paul.Chaloux@aphis.usda.gov